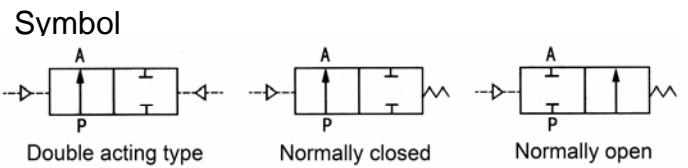


JZF Series Angle Seat Valve



Features

- With external air pilot, longer than normal service life is obtainable, free of maintenance;
- Stainless steel body, brass body for option
- With angle seat structure, large flow rate is achievable, especially to normal poppet valves;
- Compact construction, quick response;
- Media temperature: -10 ---+ 180°C

How to Order

JZF	-----	BR	-----	15	-----	NO
Angle seat valve		BR: Bronze material SS: Stainless steel material		15: G1/2" 20: G3/4" 25: G1" 32: G1-1/4" 40: G1-1/2" 50: G2"		Standard: Normally closed DA: Double acting NO: Normally open

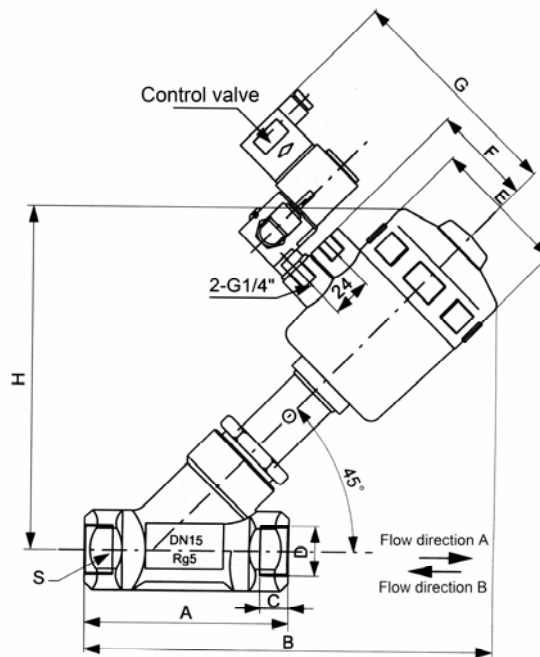
Subject to change without notice, for updated information, please visit www.pneumission.com



Specifications:

Nominal Diameter	Pipe joint	Kv(m ³ /h)	Max. working pressure(MPa)	Actuation unit(Polyamide)	Min. working pressure(MPa)	Flow direction
15	G1/2"	4.2	1.6	50	0.39	Direction A or B
20	G3/4"	8	1.1	50	0.39	
25	G1"	19	1.1	63	0.42	
32	G1-1/4"	27.5	1.5	63	0.50	
40	G1-1/2"	42	1.25	63	0.44	
50	G2"	55	1.0	--	0.40	

Dimensions(mm):



Nominal Diameter	Pipe joint	Actuation unit(Polyamide)	A	B	C	∅ E	F	G	H	L	S
15	G1/2"	50	85	173	12	64	44	112	137	33	27
20	G3/4"	50	95	178	12	64	44	112	145	35	32
25	G1"	63	105	212	14	80	52	120	173	40	41
32	G1-1/4"	63	142	236	16	80	52	120	189	35	55
40	G1-1/2"	63	130	230	18	80	52	120	189	35	55
50	G2"	63	150	238	20	80	52	120	250	38	70

