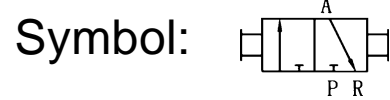


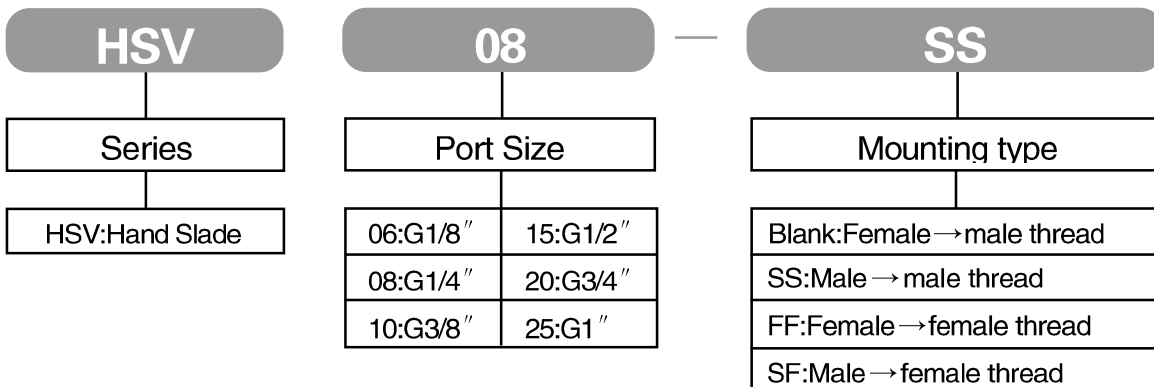
Specifications:

Type	HSV06	HSV08	HSV10	HSV15	HSV20	HSV25
Medium	Air					
Port size	06	08	10	15	20	25
Port size(G)	1/8"	1/4"	3/8"	1/2"	3/4"	1"
Cv	23mm ² (1.28)	40mm ² (2.2)	62mm ² (3.5)	140mm ² (7.8)	250mm ² (13.8)	392mm ² (21.78)
Operating pressure(Mpa)	0~10					
Proof pressure(Mpa)	15					
Ambient temperature	-5~60°C					

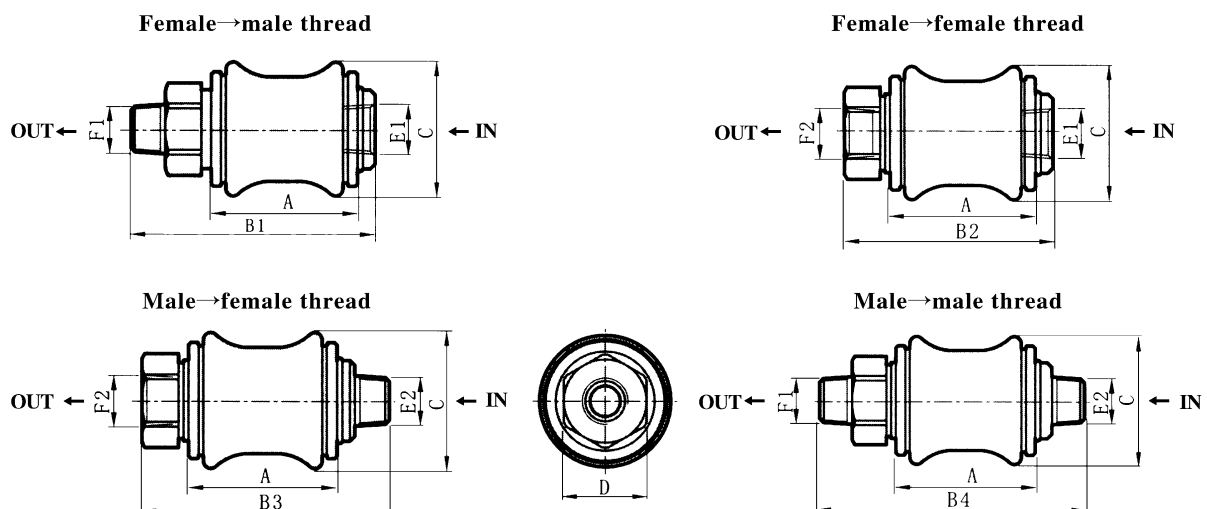
Hand Slide Valve



How to order:



Dimensions(mm):



Type	A	B1	B2	B3	B4	C	D	E1	E2	E3	E4
HSV06	30	50	43	50	57	27.5	17	G1/8	G1/8	G1/8	G1/8
HSV08	32.5	58	47	58	69	30	19	G1/4	G1/4	G1/4	G1/4
HSV10	39	68.5	55.5	68.5	81.5	35.5	22	G3/8	G3/8	G3/8	G3/8
HSV15	50	85.5	70.5	85.5	100.5	44	30	G1/2	G1/2	G1/2	G1/2
HSV20	58	96.5	79.5	96.5	113.5	53.5	36	G3/4	G3/4	G3/4	G3/4
HSV25	70	114.5	96.5	114.5	132.5	65.6	44	G1	G1	G1	G1