

PULSE SOLENOID VALVE



CONTENT

R11 Series , Thread Style

R21 Series , Thread Style

R21-DDR Series , Tube Style

R31-Y Series , In-line Style



Order Application Form

SPECIFICATION REQUIREMENTS

Valve Body Code (You Selected) _____ (Please read our catalogue and select one)

Valve Type: 2-Way 3-Way Normally Closed Normally Open Directional Control Dual-purpose

Port Type: NPT BSPP BSPT UNF Flange **Size** _____

Orifice _____ (Body) _____ (Stop) **Cv** _____ (Body) _____ (Stop)

Operating Pressure= _____ PSI **Max. Operating Pressure=** _____ PSI

Pressure Differential= _____ PSI **Max. Vacuum** (if Applicable)= _____

Flow Rate (Gas): _____ SCFM @ Inlet Pressure= _____ PSIG, Outlet Pressure= _____ PSIG

Flow Rate (Liquid): _____ SCFM @ Inlet Pressure= _____ PSIG, Outlet Pressure= _____ PSIG

Coil Voltage = _____ V, DC AC _____ Hz

Coil Connector: DIN Spade Lead Wire, Length _____ inches, _____ mm

Duty Cycle: Continuous Duty Intermittent Duty, Max Energized _____ minute, Max De-energized _____ minute

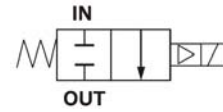
Operating Speed: _____ cycles/minute

Medium: _____

Medium Temp. _____ Min _____ Max. **Ambient Temp.** _____ min _____ max



R11 Series, Thread Style



Compatible Fluid

Air

Fluid Temperature

- -4°F to 185°F , -20°C to 85°C

Pressure

- Min. Pressure Difference: 0.3Mpa
- Max. Pressure Difference: 0.8Mpa

Port Size

- 3/4",1"

Port Thread

NPT,BSPT,BSPP,UNF

Orifice

- 20、25mm

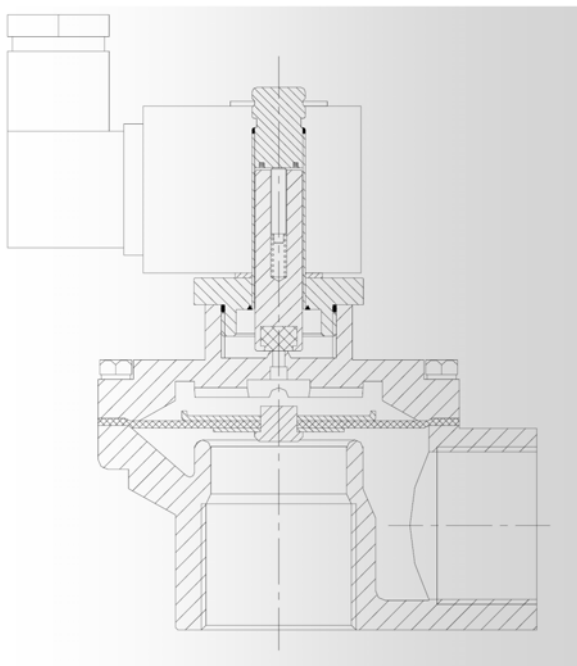
Voltage

- DC -24V
- AC - 24V, 120V, 240V@60HZ; 110V, 220V@50HZ
- Tolerance: +/- 10%



Available Coils & Power Consumption

- SS1B, 22VA(AC), 17W(DC), IP65,100%ED

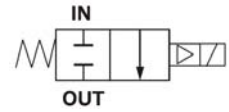


Material

- Body- Aluminum
- Sleeve Tube - Stainless Steel
- Stop -Stainless Steel
- Springs - Stainless Steel
- Shading Rings - Stainless Steel
- Seal -NBR. EPDM. VITON



R21 Series, Thread Style



Compatible Fluid

Air

Fluid Temperature

- -4°F to 185°F , -20°C to 85°C

Pressure

- Min. Pressure Difference: 0.3Mpa
- Max. Pressure Difference: 0.8Mpa

Port Size

- 1-1/2", 2", 2-1/2"

Port Thread

NPT,BSPT,BSPP,UNF

Orifice

- 40、50、65mm

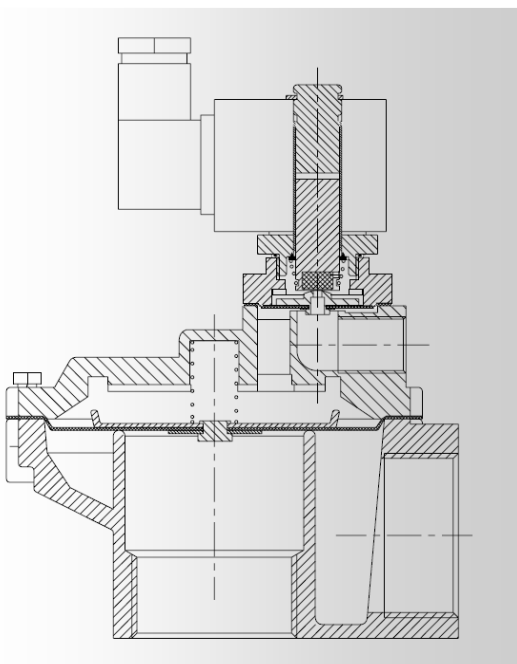
Voltage

- DC -24V
- AC - 24V, 120V, 240V@60HZ; 110V, 220V@50HZ
- Tolerance: +/- 10%



Available Coils & Power Consumption

- SS1B, 22VA(AC), 17W(DC), IP65,100%ED

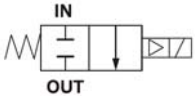


Material

- Body- Aluminum
- Sleeve Tube - Stainless Steel
- Stop -Stainless Steel
- Springs - Stainless Steel
- Shading Rings - Stainless Steel
- Seal -NBR. EPDM. VITON

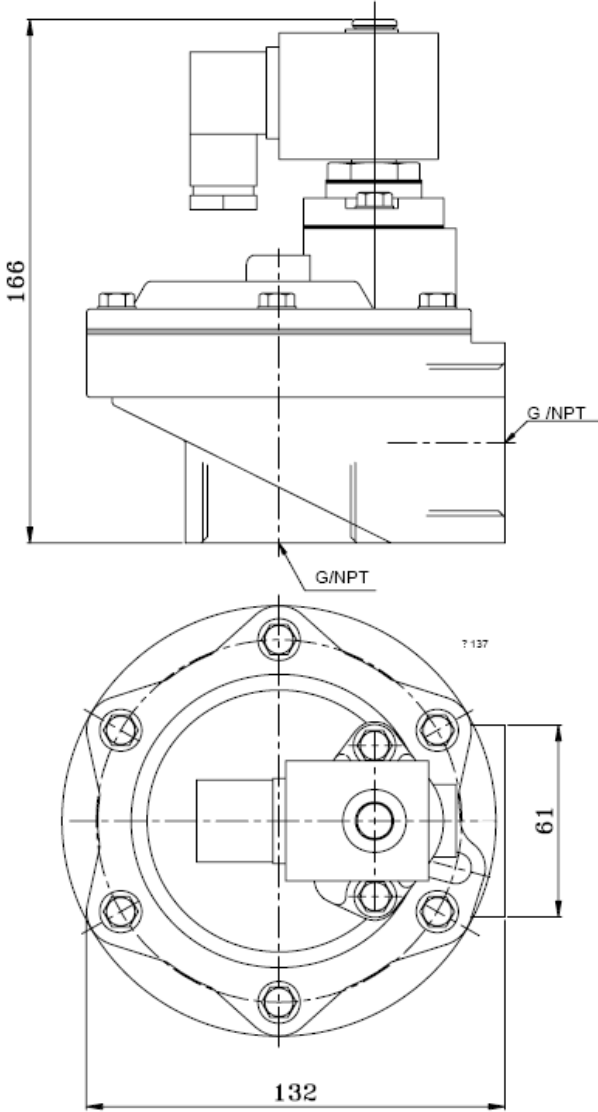


R21- 40,50,65

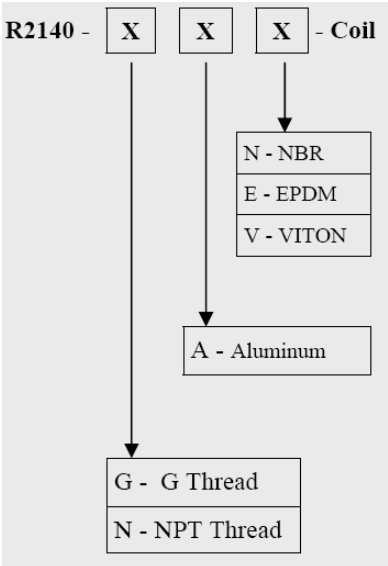


Port Size	Orifice	Cv	Min Pressure	Max Pressure		Seals Material	Body Material	Valve Body	Coil
				AC(22VA)	DC(17W)				
1 1/2"	40	29	0.3MPa	0.8MPa	0.8MPa	NBR, EPDM, or VITON	Aluminum	R2140 X XX	SS1B
2 "	50	48	0.3MPa	0.8MPa	0.8MPa			R2150X X X	SS1B
2 1/2"	65	68	0.3MPa	0.8MPa	0.8MPa			R2165X X X	SS1B

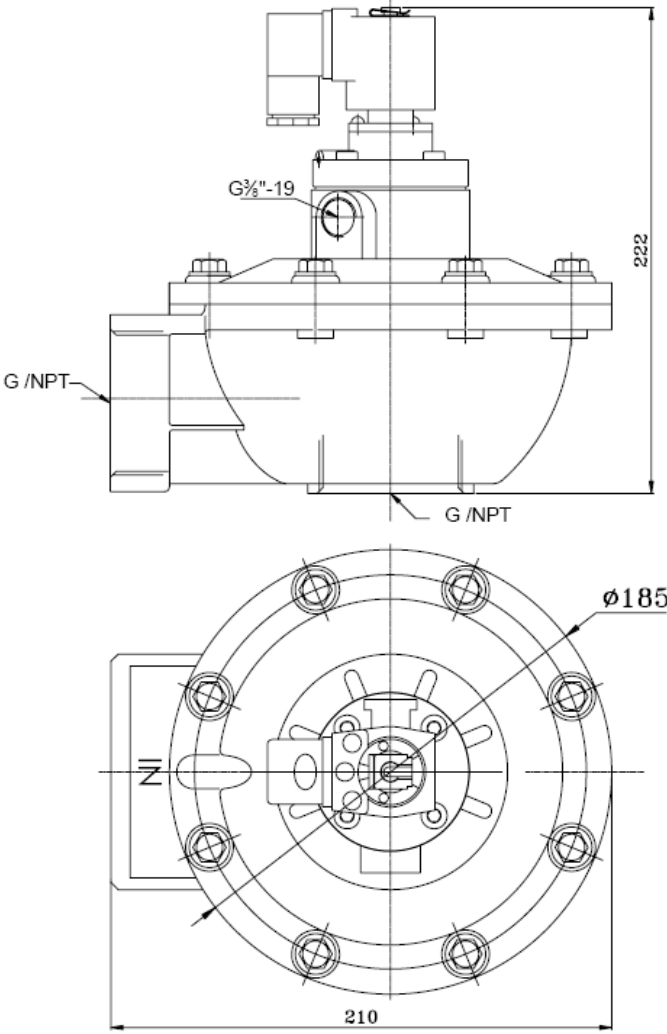
R21-40



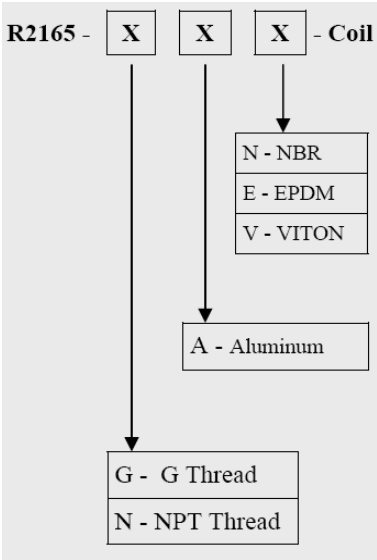
Determine Valve Body Code



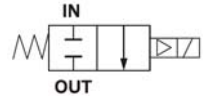
R21-65



Determine Valve Body Code



GR21-DDR Series, Tube Style



Compatible Fluid

Air

Fluid Temperature

- -4°F to 185°F , -20°C to 85°C

Pressure

- Min. Pressure Difference: 0.3Mpa
- Max. Pressure Difference: 0.8Mpa

Port Size

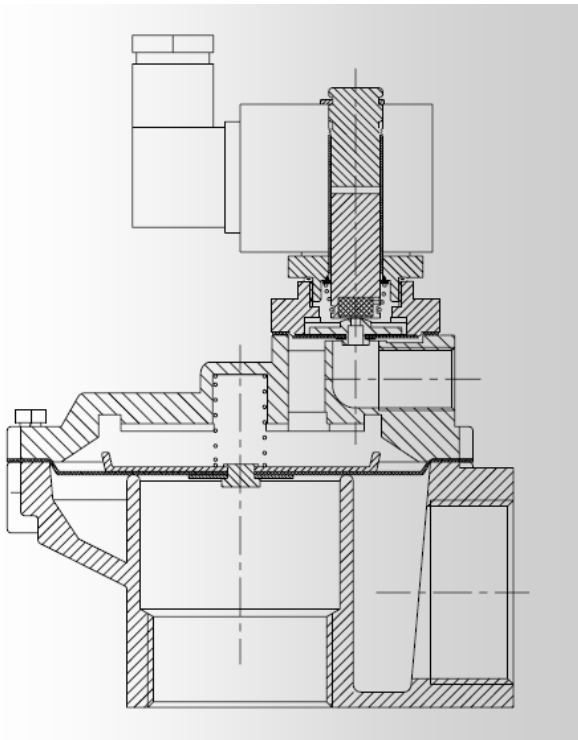
- 1", 1-1/2"

Orifice

- 25、45mm

Voltage

- DC -24V
- AC - 24V, 120V, 240V@60HZ; 110V, 220V@50HZ
- Tolerance: +/- 10%



Available Coils & Power Consumption

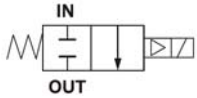
- SS1B, 22VA(AC), 17W(DC), IP65,100%ED

Material

- Body– Aluminum
- Sleeve Tube - Stainless Steel
- Stop -Stainless Steel
- Springs - Stainless Steel
- Shading Rings - Stainless Steel
- Seal -NBR. EPDM. VITON

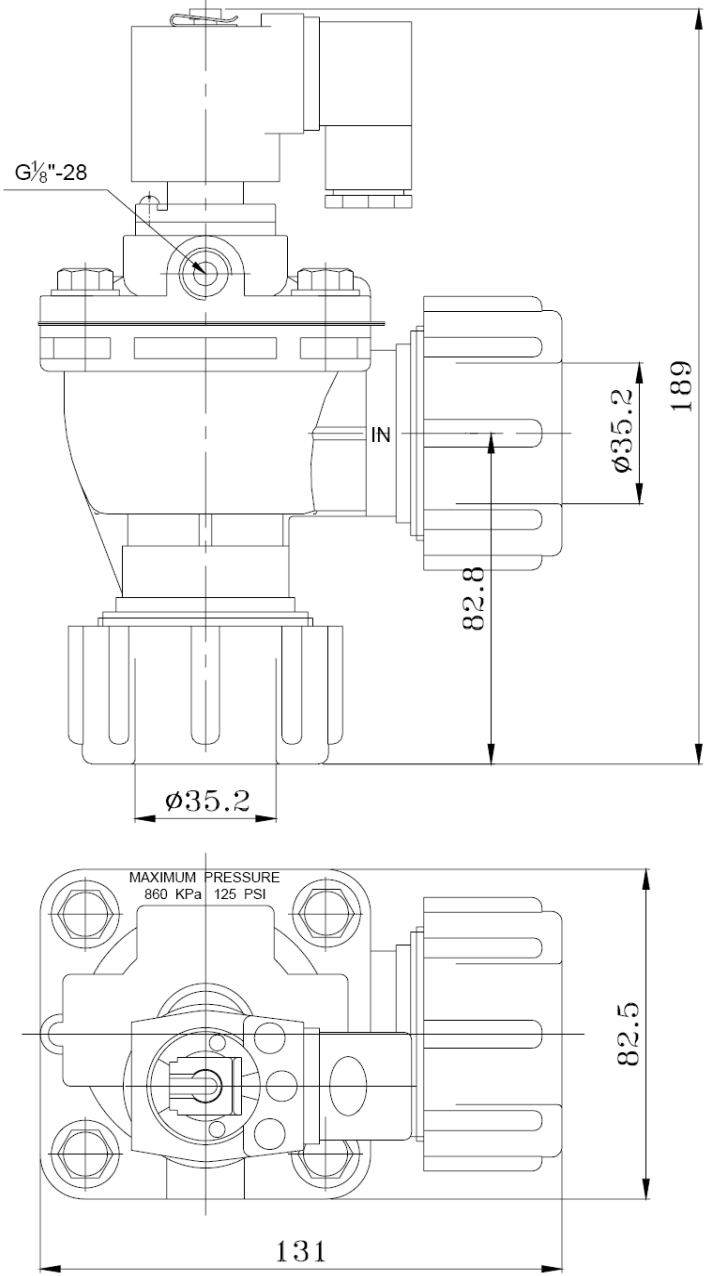


R21- 25DDR,45DDR

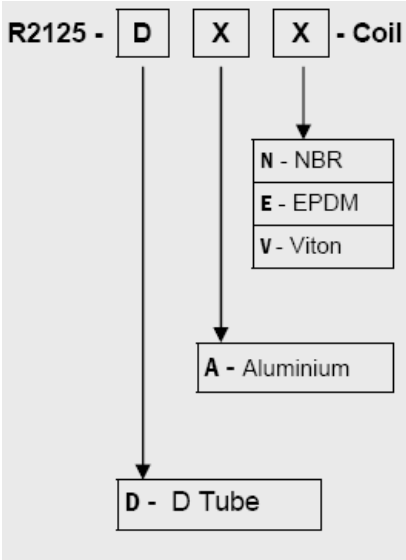


Port Size	Orifice	Cv	Min Pressure	Max Pressure		Seals Material	Body Material	Valve Body	Coil
				AC(22VA)	DC(17W)				
1"	25	12	0.3MPa	0.8MPa	0.8MPa	NBR, EPDM, or VITON	Aluminum	R2125D X X	SS1B
1-1/2"	45	30	0.3MPa	0.8MPa	0.8MPa			R2145D X X	SS1B

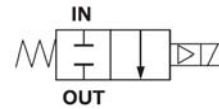
R21-25DDR



Determine Valve Body Code



R31-Y Series, In-line Style



Compatible Fluid

Air

Fluid Temperature

- -4°F to 185°F , -20°C to 85°C

Pressure

- Min. Pressure Difference: 0.3Mpa
- Max. Pressure Difference: 0.8Mpa

Port Size

- 2",2-1/2",3"

Port Thread

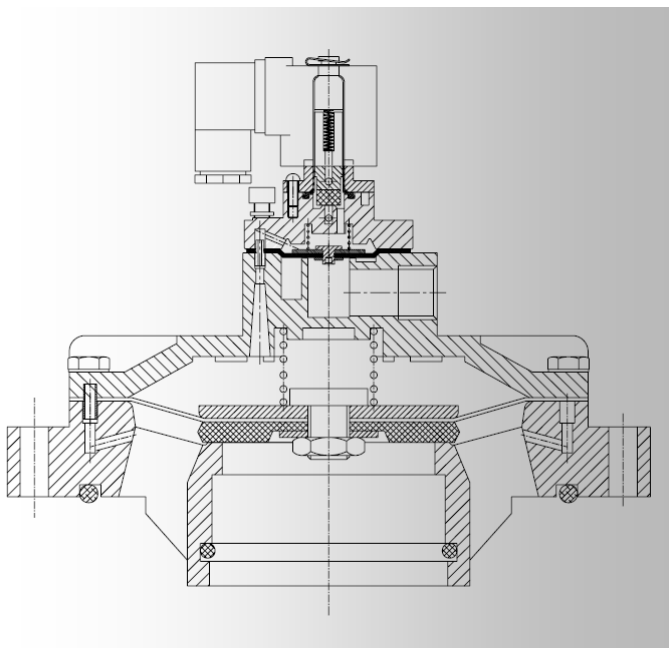
NPT,BSPT,BSPP,UNF

Orifice

- 50、65、75mm

Voltage

- DC -24V
- AC - 24V, 120V, 240V@60HZ; 110V, 220V@50HZ
- Tolerance: +/- 10%



Available Coils & Power Consumption

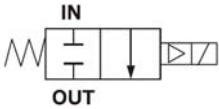
- SS1B, 22VA(AC), 17W(DC), IP65,100%ED

Material

- Body– Aluminum
- Sleeve Tube - Stainless Steel
- Stop -Stainless Steel
- Springs - Stainless Steel
- Shading Rings - Stainless Steel
- Seal -NBR. EPDM. VITON

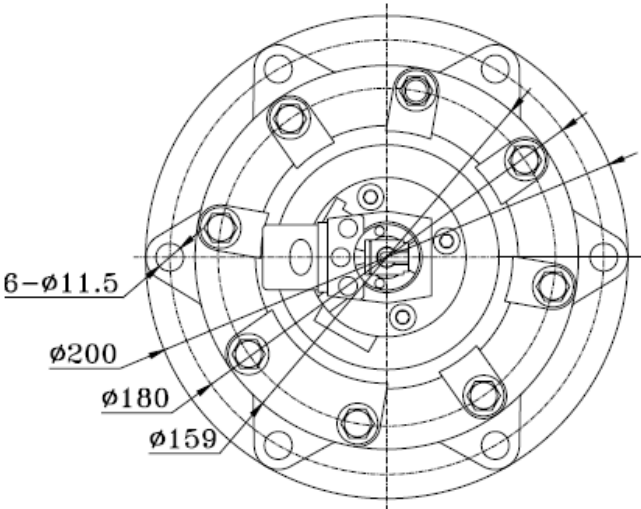
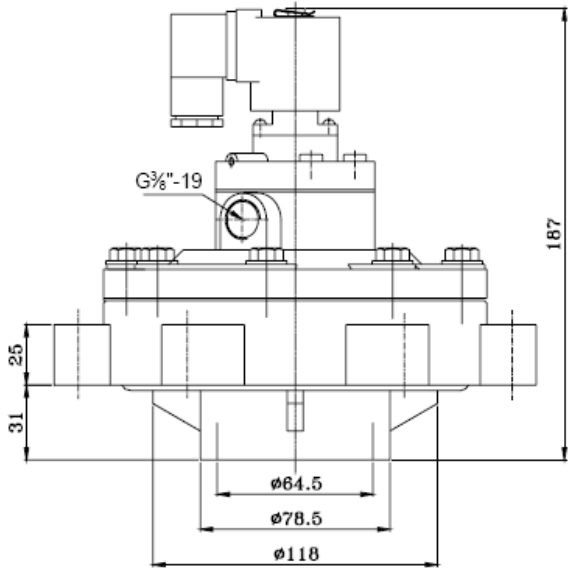


R31- 50Y,65Y,76Y

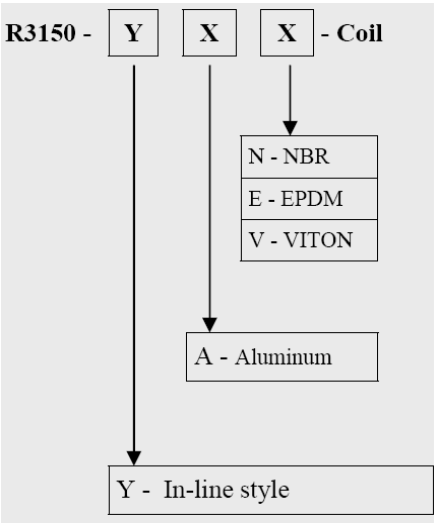


Port Size	Orifice	Cv	Min Pressure	Max Pressure		Seals Material	Body Material	Valve Body	Coil
				AC(22VA)	DC(17W)				
2"	50	48	0.3MPa	0.8MPa	0.8MPa	NBR, EPDM, or VITON	Aluminum	R3150YX X	SS1B
2-1/2"	62	68	0.3MPa	0.8MPa	0.8MPa			R3165Y X X	SS1B
3"	76	100	0.3MPa	0.8MPa	0.8MPa			R3176Y X X	SS1B

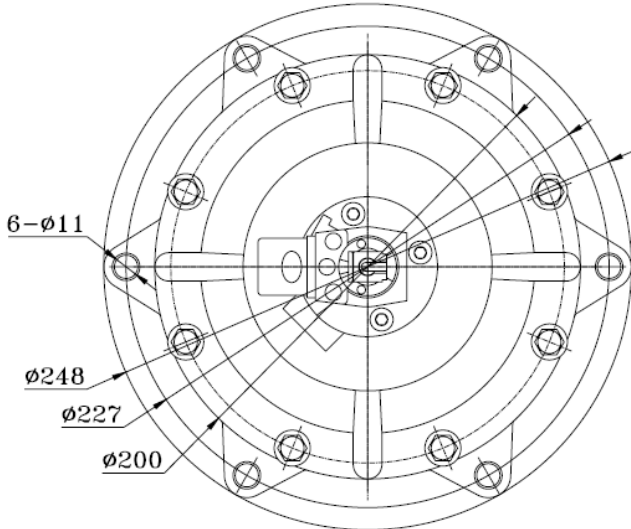
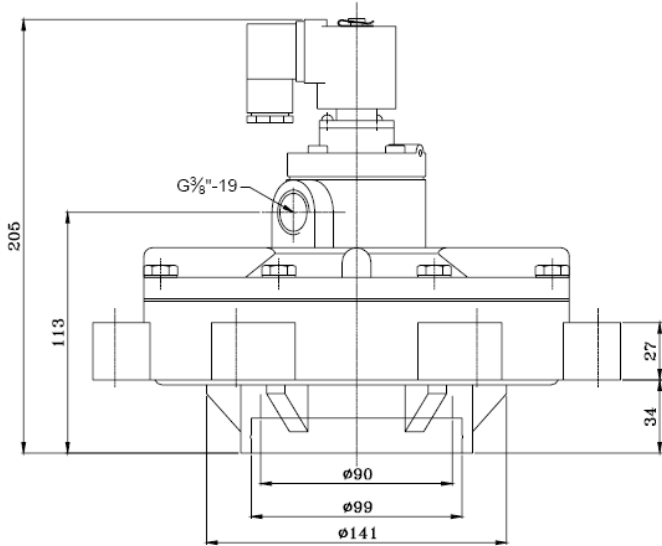
R31-50Y



Determine Valve Body Code



GR31-76Y



Determine Valve Body Code

